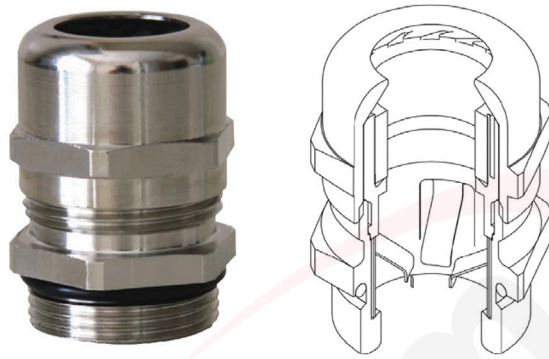


Glands and Locknuts

EMC 2 Cable Glands and Locknuts



Description

The EMC 2 cable gland combines several advantages in one product; it offers the same clamping range as with the normal brass gland, with a protection class of IP68. This high tech gland consists of body plastic inlet, EMC spring and neoprene seal.

Specification

MATERIAL:	Brass Nickel Plated
PROTECTION CLASS:	IP 68
TEMPERATURE RANGE:	-40°C to +100°C
CLAMPING INSERT:	Polyamide 6
SEALING RING:	Neoprene

Glands and Locknuts

EMC 2 Cable Glands and Locknuts

Metric Thread Cable Glands

PART NO.	THREAD SIZE	TD (hole size mm)	TL (length of thread)	CABLE RANGE (min-max)	PACK QUANTITY
EMC2-M12	M12 x 1.5	12.0	6.0	3.0 - 6.5	1
EMC2-M16	M16 x 1.5	16.0	7.0	4.0 - 8.0	1
EMC2-M20	M20 x 1.5	20.0	8.0	6.0 - 12.0	1
EMC2-M25	M25 x 1.5	25.0	8.0	10.0 - 14.0	1
EMC2-M32	M32 x 1.5	32.0	9.0	13.0 - 18.0	1
EMC2-M40	M40 x 1.5	40.0	9.0	18.0 - 25.0	1
EMC2-M50	M50 x 1.5	50.0	9.0	22.0 - 32.0	1
EMC2-M63	M63 x 1.5	63.0	14.0	34.0 - 44.0	1



Metric Thread Cable Glands

PART NO.	THREAD SIZE	DEPTH (mm)	PACK QUANTITY
EMC2/M12	M12 x 1.5	3.3	1
EMC2/M16	M16 x 1.5	3.5	1
EMC2/M20	M20 x 1.5	3.5	1
EMC2/M25	M25 x 1.5	3.5	1
EMC2/M32	M32 x 1.5	4.0	1
EMC2/M40	M40 x 1.5	4.6	1
EMC2/M50	M50 x 1.5	5.6	1
EMC2/M63	M63 x 1.5	6.7	1

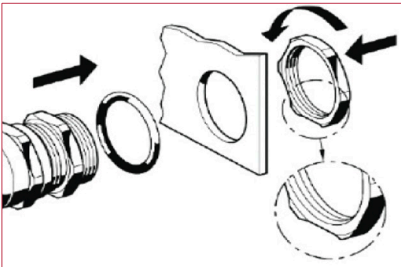


Glands and Locknuts

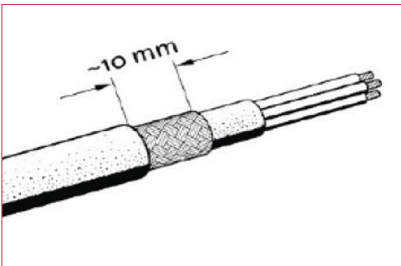
EMC 2 Cable Glands and Locknuts

Installation

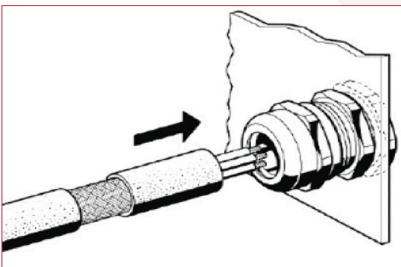
Tightening the dome nut will have three different effects: the cable will be centred in the cable gland, the neoprene seal will ensure IP 68 protection, and the design of the dome cap will provide appropriate strain relief - simply done by just one turn of the dome cap. Uninstalling the cable is easy; open the dome cap and pull the cable out of the cable gland together with the insert, which can then be removed easily.



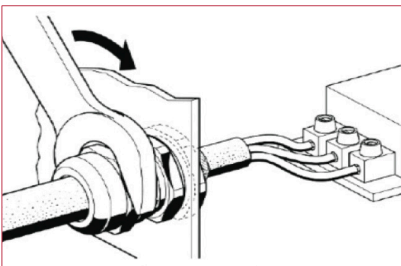
1. Tighten the cable gland



2. Remove outer sheath of cable



3. Insert cable to EMC spring



4. Lock and tighten the cap