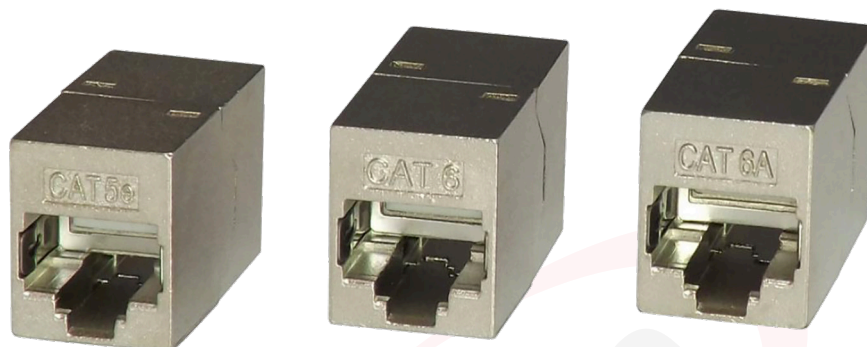


RJ45 Coupler

Shielded Inline Coupler FACSm (Cat5e), SACSm (Cat6) and SGAC (Cat6A)



Features

- RoHS Compliant
- PoE Compliant
- Robust and compact design
- High performance data throughput at relevant Category 5e/ Category 6/ Category 6A data transfer rates
- Die cast shielded
- RJ45 complies with FCC part 68 standard / IEC 60603-7-1
- Jack insertion life > 750 mating cycles
- Operating temperature: -40°C ~ +60°C

Specifications

- Weight: approx. 17g
- Dimensions (LxWxH): approx. 29.5 x 17.26 x 14.76mm
- Housing: Nickel plated zinc alloy
- Contacts: 50µ"/1.27µm gold plated over nickel over phosphor bronze
- Earthing lug material: Stainless steel SUS304

RJ45 Coupler

Shielded Inline Coupler FACSm (Cat5e), SACSm (Cat6) and SGAC (Cat6A)

Electrical

Current Rating : 1.5 A

Dielectric Withstanding Voltage : 1000 VDC

Insulation Resistance : 500 MΩ Min.

Contact Resistance : 20 mΩ Max.

Mechanical

- (1) Materials : Zn alloy
- (2) Cosmetic : Electroplating Ni + Sandblasting
- (2) RJ45 Jack Contact : Phosphor bronze, 50u" Gold Plating
- (3) Cavity conforms to FCC rules and Regulations Part 68
- (4) Earthing lug material : Stainless steel SU304
- (5) Lettering : 'CAT5e' 'CAT6' 'CAT6A' according to item

