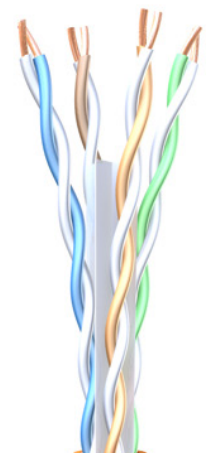
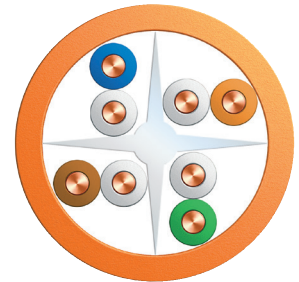


SureLAN[®] 6a <10Gb> U/UTP

Cable Design *4x2x23awg U/UTP*

Conductor	Solid bare copper wire, 23awg
Insulation	Polyethylene (PE)
Core identification	WH/BE - WH/OE - WH/GN - WH/BN
Assembly	2 cores twisted to a pair
Formation	4 pairs with X-Filler
Central Element	Cross separator
Outer Jacket	LSZH FireFighter [®]
Diameter	Ø 6,60 ± 0,20 mm
Colour	Orange or Ivory



Application

500 MHz Unscreened data transmission cable for high quality requirements, backward compatible with current data-services as well as 10 Gigabit-Ethernet. Installation is easy because of a central element (cross) no individual shield is required. Usable for: 10Base-T; 100Base-T;1000Base-T; 10GBase-T; CDDI/TPDDI;ISDN;ATM 155 Mbit/s, TP-PMD 125 Mbit/s, Token Ring 4/16 Mbit/s, analogue telephony.

Acc. to ISO/IEC 11801 2nd.ed., EN 50173-1, TIA/EIA 568-C.2, EN 50288-5-1, IEC 61156-5.

Electrical Data at 20°C

Conductor Loop resistance	≤ 18 Ω/100m
Insulation Resistance	≥ 5 GΩ x km
Operating Capacitance (nom.)	50 nF/km
Capacitance unbalance (nom.)	≤ 150 pF/100m
Rel. Velocity of Propagation	67 %
Characteristic Impedance at 1-100 MHz	100 ± 15 Ω
Characteristic Impedance at 100-250 MHz	100 ± 22 Ω
Characteristic Impedance at 250-600 MHz	100 ± 25 Ω
Test Voltage	700 V - AC



Frequency (MHz)	Attenuation (dB/100m)		NEXT (dB)		ACR dB/100m	EL-FEXT (dB)		Return Loss (dB)	
	Nom.	Max. Cat 7	Nom.	Min. Cat 6		Nom.	Min. Cat 6	Nom.	Min. Cat 6
1	1.7	[2.0]	87	66	85.3	85	66	24	-
4	3.5	3.6	76	65	72.5	72	56	27	23.1
10	5.5	5.7	72	60	66.5	63	50	30	25
16	6.9	7.2	70	56	63.1	60	46	30	25
20	7.7	8.1	68	55	60.3	58	44	30	25
100	18.2	18.5	63	44	44.8	43	30	30	20.1
155	22.9	23.4	60	41	37.1	40	26	28	18.8
200	26.0	26.8	57	40	31.0	38	24	27	18.0
300	32.3	33.3	55	-	22.7	36	-	25	-
500	39.8	44.1	53	-	13.2	34	-	22	-

The performance data given are typical measured values

Mechanical & Thermal Characteristics

Bending radius	Dynamic (installation)	8 x Ø
	Static (installed)	4 x Ø
Temperature range	stationary	-20° C up to +60° C
	flexing	-0° C up to +50° C
Max. Pulling Tension		100 N
Weight		52 kg/km

Specification

Part Number	Type	Colour	Calorific Potential <i>MJ/km</i>
7290	Cat6a <10Gb> U/UTP	 Ivory	420
7290	Cat6a <10Gb> U/UTP	 Orange	420