

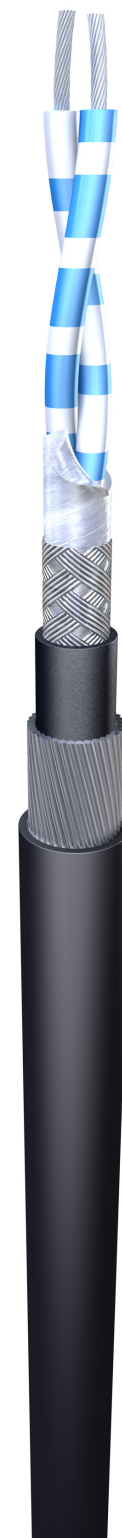
DataGuard® (SWA) LSZH FireFighter® (RS) TIA-485 Long Distance Installation Control Cable

Cable Design

Conductor	Stranded tinned copper wire
AWG	18awg (16/0.25mm)
Insulation	XLPE
Diameter	Ø 3,10 mm
Screened pair	2 cores twisted to a pair
Screen	>100% Aluminium/polyester tape (Alu. Outside)
Pair identification	Chart 5
Formation	1 or 2 screened pairs.
Overall Screen	Tinned Copper Wire Braid
Coverage	Nom. 65% Optical Coverage
Inner Jacket	LSZH FireFighter® SHF-1
Colour	Black
Rated Voltage	600 V
Temperature Range	-20° C up to +90° C
Armour	DataGuard® Steel Wire Armour (DSWA)
Outer Jacket	LSZH FireFighter® SHF-1
Diameter	see table
Colour	Black



Image shown : 14631P18X44



Standards

Flame Retardant	IEC 60332-1 flame resistance for single cables
Flame Retardant	IEC 60332-3 flame resistance for bunched cables
Halogen Free	IEC 60754 series
Smoke Emission	IEC 61034 series
827.50-2	IEC 60092-359

Characteristics

Part Number	Overall Diameter <i>mm</i>	Nom. Capacitance (cond./cond.) <i>pF/m</i>	Nom. Capacitance (cond./cond./screen) <i>pF/m</i>	Conductor DC Resistance <i>Ω/km</i>	Nom. Velocity of propagation <i>%</i>	Nom. Impedance <i>Ω</i>
14631P18X44	12.30	48	91	22	67	120
14632P18X44	14,20	48	91	22	67	120