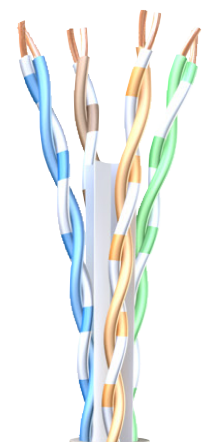
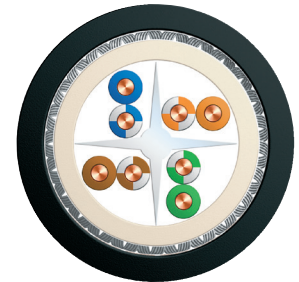


Armada[®] Cat6 <350 MHz> 24/1awg U/UTP LSZH/DataGuard[®] GSWB/SHF-1

Cable Design

Conductor	Solid Bare Cu-wire AWG 24/1
Insulation	Polyethylene (PE)
Pair assembly	2 cores twisted to a pair. 4 pairs total
Pair identification	whbu-bu, whor-or, whgn-gn, whbn-bn
Cable core	Central X-Filler
Screen	Unshielded
Inner Jacket	LSZH FireFighter [®]
Diameter	Ø 6,30
Armour	DataGuard [®] Galvanised Steel Wire Braid (GSWB)
Outer Jacket	LSZH FireFighter [®] SHF-1
Diameter	Ø 9,70
Weight	186 kg/km



Application

DataGuard[®] armoured data transmission cable for frequency range up to 350 MHz with good system reserves (better than Category 6). For high quality requirements and all current data services as well as gigabit ethernet. Easy to install.

Use : 10/100/1000Base-T; CDDI/TPDDI; ISDN; ATM; 155 MBit/s, TP_PMD 125 Mbit/s, Token Ring 4/16 Mbit/s, analogue telephony.

Standards

Applicable Standards	ISO-IEC 11801 2nd edition, EN 50173-1, TIA/EIA 568, EN 50288-6-1 IEC 61156-5.
Flamability Rating	IEC 60332-1, IEC 60332-3-22, IEC 60754-2, EN 61034, IEC 61034

Specification

Part Number	Type
245001	Cat6 4x2xAWG24/1 U/UTP <350 MHz> LSZH/GSWB/SHF-1

Thermal & Mechanical Characteristics

Temperature range	during installation	0 to +50	°C
	stationary	-20 to +60	°C
Min. bending radius	under tensile load	6	x Ø
	without tensile load	3	x Ø

Electrical Characteristics

Conductor loop resistance max.		19	Ω/100m
Characteristic impedance	1-100 MHz	100±15	Ω
	100 - 250 MHz	100±22	Ω
Insulation resistance min.		5	GΩ x km
Mutual capacitance nom.		50	nF/km
Relative propagation velocity ca.		0,67	c
Coupling attenuation min.	10 MHz	45	dB
Test voltage		700	V-AC

Frequency (MHz)	Attenuation (dB/100m)	NEXT (dB)	ACR (dB/100m)	ELFEXT (dB/100m)	RL (dB)
	<i>Nom.</i>	<i>Nom.</i>	<i>Nom.</i>	<i>Nom.</i>	<i>Nom.</i>
1	1,8	87	85,2	85	23
4	3,5	76	72,5	72	27
10	5,6	72	66,4	63	30
16	7,0	70	63,0	60	30
20	7,9	68	60,1	58	30
100	18,2	63	44,8	43	29
155	22,9	60	37,1	40	28
200	26,0	57	31,0	38	26
300	32,5	55	22,5	36	24
350	35,2	54	18,8	35	22