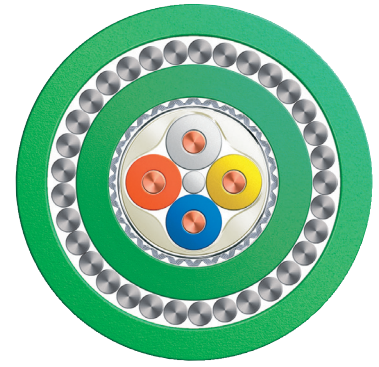


# DataGuard® (SWA)

PROFINET Type A Industrial Ethernet Cat 5e ES

LSZH FireFighter®



## Cable Design

### Wire

Conductor	Solid bare copper wire (22awg)	Ø 0,65 mm
Insulation	Polyethylene (PE)	Ø 1,50 mm

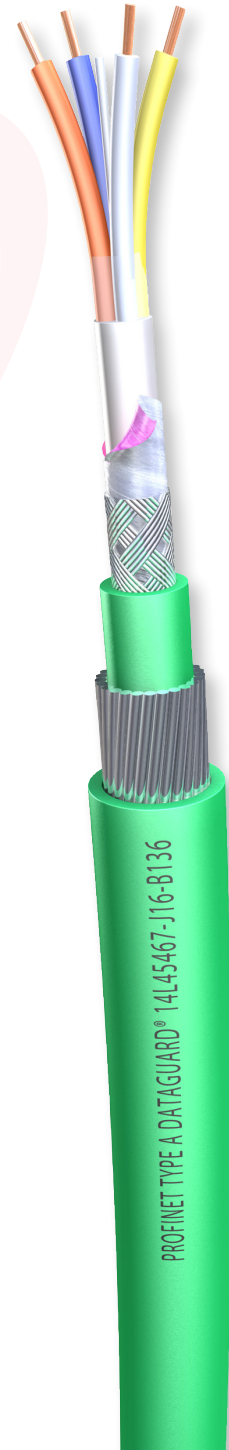
### Core

Central Element	Filler	
1° Layer	4 wires twisted (WH-YE-BU-OG)	
Tape	Plastic tape overlapped	
EasyStrip Jacket	Soft Thermoplastic copolymer	Ø 4,0 mm
Screen	Alulaminat foil overlapped	
Braid	Tinned copper wire braid, 85% coverage	Ø 4,60 mm

Inner Jacket	LSZH (Low Smoke Zero Halogen), Green	Ø 6,5 ± 0,20 mm
--------------	--------------------------------------	-----------------

Armour	DataGuard® Steel Wire Armour (DSWA)	
--------	-------------------------------------	--

Outer Jacket	LSZH FireFighter®, Green	Ø 11,0 ± 0,50 mm
--------------	--------------------------	------------------



## Characteristics

- Indoor/Outdoor applications
- Mechanical protection
- Rodent Protection
- Direct Burial
- UV-Stable and colourfast
- Flame retardant acc. to IEC 60332-3 Cat. A/F,
- Halogen free acc. to IEC 60754,

## Specification

Part Number	Type
14L45467-J16-B136	Industrial Ethernet Cat 5e, PROFINET cable for permanent installation LSZH, 2x2x22AWG1, DataGuard® (SWA) / LSZH FireFighter®

# DataGuard® (SWA)

PROFINET Type A Industrial Ethernet Cat 5e ES

LSZH FireFighter®

## Electrical Data @ 20°C

Loop resistance		≤	124	Ohm/km
Resistance Difference			5	%
Signal run time		≤	5,3	ns/m
Insulation resistance		≥	500	MOhm*km
Characteristic Impedance	1-100 MHz		100±15	Ohm
Ground unbalance attenuation	64 kHz	>	43	dB
Capacity unbalanced to ground	1 MHz	≤	3300	pF/m
Return Loss (dB)	1 ≤ f ≤ 10 MHz		20+5	log (f)
Return Loss (dB)	10 ≤ f ≤ 20 MHz		25	
Return Loss (dB)	20 ≤ f ≤ 100 MHz		25-7	log (f/20)
Surface Transfer Impedance	10 MHz	≤	10	mOhm/m
UL-Rating			600	V
Test Voltage (wire/wire/screen rms 50Hz min.)			2000	V

Frequency (MHz)	0,256	0,512	0,772	1	4	10	16	20	31,25	62,5	100
Attenuation typ. Value (dB/100m)	0,8	1,0	1,1	1,6	3,2	5,2	6,9	7,8	10,5	15	19,5
NEXT typ. Value (dB/100m)	-	-	≥ 80	≥ 80	75	70	65	63	60	55	50
FEXT typ. Value (dB/100m)	-	-	≥ 80	≥ 80	75	65	59	55	50	47	45

## Mechanical & Thermal Characteristics

Permissible temperature range	-25 ~ +75	°C
Min. Bending radius allowed	10 x Ø	(see Ø tolerance)
Weight (approx.)	340	kg/km

*Belcom Cables Ltd. ("Belcom") reserves the right to make changes to the product described in this specification without prior notice. Belcom does not assume any liability which may occur due to the use of the specification described herein. Drawings are not to scale unless otherwise specified and are provided for general and informational purposes only. All values represented in this specification should be used as a guide only and exact product details can be confirmed at point of enquiry.*