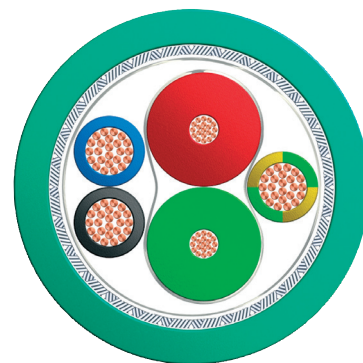


PROFIBUS DP

ET200C Hybrid Cable for Flexible Installation



Cable Design

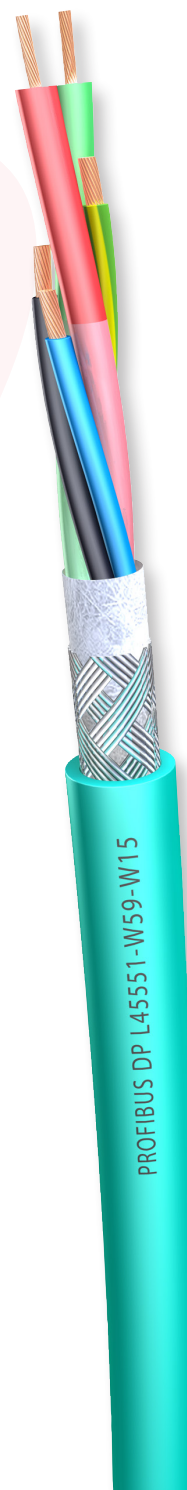
Power Core		
Conductor	Stranded bare copper wire (24x0,20mm)	0,75mm ² Ø 1,15 mm
Insulation	Polyvinylchloride (PVC)	Ø 1,70 mm
Pair		
Conductor	Stranded tinned copper wire 19/0,13mm	Ø 0,65 mm
Insulation	Foamed Polyethylene (PE)	Ø 2,56 mm
Pair	2 insulated cores twisted to a pair	
Tape	Plastic tape overlapped	
Core		
Assembly	1 shielded pair (RD/GN) + 3 cores (BK/BU/GNYE)	
Fillers	Polyester yarn	
Tape	Plastic tape overlapped	
Braid	Tinned copper wire braid, 85% coverage	Ø 6,40 mm
Outer Jacket	Polyvinylchloride (PVC) petrol green	Ø 8,0 ± 0,4 mm

Characteristics

- UL-Style 2464

Specification

Part Number	Type
L45551-W59-W15	PROFIBUS DP-ET 200C, hybrid cable for flexible installation, 2x22AWG 19 + 3x0.75mm ² , UL recognised: AWM, PVC



PROFIBUS DP

ET200C Hybrid Cable for Flexible Installation

Electrical Data @ 20 °C Power Cores

Conductor resistance	≤	26	Ohm/km
----------------------	---	----	--------

Electrical Data @ 20 °C Shielded Pair

Conductor resistance	≤	84	Ohm/km
Insulation resistance	≥	20	MOhm*km
Capacitance (1 KHz)	≈	30	nF/km
Characteristic Impedance	3-20 MHz	135 - 165	Ohm
Attenuation	0,2 MHz	≤ 0,6	dB/km
Operating voltage		≤ 300	V
Test Voltage (rms 50Hz 1 min.)		2000	V

Mechanical & Thermal Characteristics

Permissible temperature range		-30 ~ +80	°C
Min. Bending radius allowed	repeated	7,5	x Ø
Min. Bending radius allowed	single	5	x Ø
Weight (approx.)		90	kg/km

Belcom Cables Ltd. ("Belcom") reserves the right to make changes to the product described in this specification without prior notice. Belcom does not assume any liability which may occur due to the use of the specification described herein. Drawings are not to scale unless otherwise specified and are provided for general and informational purposes only. All values represented in this specification should be used as a guide only and exact product details can be confirmed at point of enquiry.