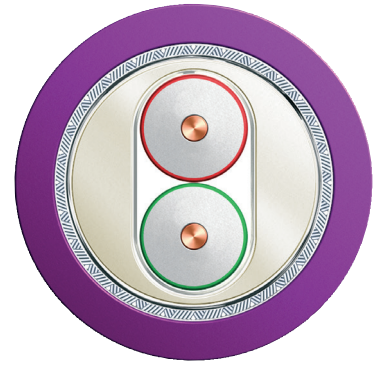


PROFIBUS DP

ES Cable for Permanent Installation (PVC)



Cable Design

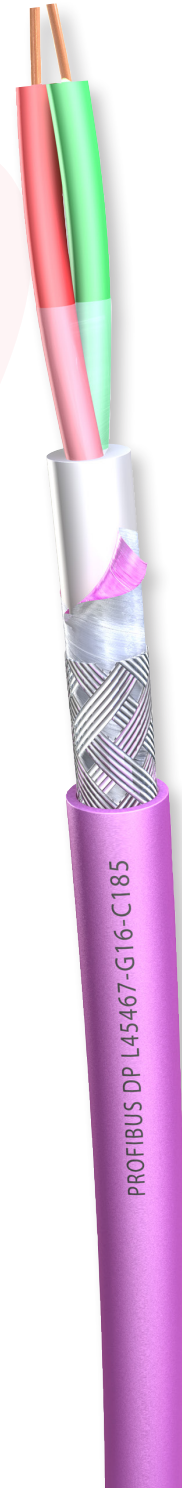
Wire

Conductor	Solid bare copper wire (22awg)	Ø 0,65 mm
Insulation	Foamed Polyethylene (PE) with skin	Ø 2,55 mm

Core

Pair	2 wires twisted to a pair (RD-GN)	
Tape	Plastic tape overlapped	
Easystrip Jacket	Soft Polyvinylchloride (PVC)	Ø 5,40 mm
Screen	Aluminium foil overlapped	
Braid	Tinned copper wire braid, 55% coverage	Ø 6,20 mm

Outer Jacket	Polyvinylchloride (PVC), Violet	Ø 8,0 ± 0,40 mm
--------------	---------------------------------	-----------------



Characteristics

- Flame retardant acc. to IEC 60332-3-24 and UL 1685 (CSA FT 4),
- Cold bending resistant acc. to IEC 60811-1-4,
- Sunlight resistant acc. to UL 2556 Sec. 4.2.8.5,
- UL-Style 21694 (600 V)

Specification

Part Number	Type
L45467-G16-C185	PROFIBUS DP ES cable for permanent installation (easy to strip), 2x22AWG1, UL listed: CMG and CL3 PVC

PROFIBUS DP

ES Cable for Permanent Installation (PVC)

Electrical Data @ 20°C

Loop resistance		≤	110	Ohm/km
Screen resistance		≤	9,5	Ohm/km
Insulation resistance		≥	16	GOhm*km
Characteristic Impedance	3-20 MHz		150±15	Ohm
Characteristic Impedance	31,25 - 38,4 kHz		185±18,5	Ohm
Characteristic Impedance	9,6 kHz		270±27	Ohm
Attenuation	16 MHz	≤	42	dB/km
Attenuation	4 MHz	≤	22	dB/km
Attenuation	38,4 kHz	≤	4	dB/km
Attenuation	9,6 kHz	≤	2,5	dB/km
L/R Ratio		≤	15	μH/Ohm
Inductance (31,25 kHz)		≈	1000	μH/km
Inductance Value			900	μH/km
Capacitance (1 kHz)		≈	28,5	nF/km
Unbalance to ground		≤	1500	pF/km
Operating voltage (effective value)		≤	100	V
UL-Rating			600	V
Rel. Velocity of Propagation		≈	81	%
Test Voltage (DC 3 sec)		=	3600	V

Mechanical & Thermal Characteristics

Permissible temperature range			-40 ~ +80	°C
Bending diameter		≥	150	mm
Pulling force with		≤	100	N
Weight (approx.)			80	kg/km

Belcom Cables Ltd. ("Belcom") reserves the right to make changes to the product described in this specification without prior notice. Belcom does not assume any liability which may occur due to the use of the specification described herein. Drawings are not to scale unless otherwise specified and are provided for general and informational purposes only. All values represented in this specification should be used as a guide only and exact product details can be confirmed at point of enquiry.